



A 501(c)3 non-profit organization

Welcome

February 19, 2026 EPIC Campus, Littleton CO
Meetings are the third Thursday of each month
Club Website: <https://highlandbeekeeping.com/>



Board Members

President: Ellen McClurkin

Vice President: Marc Pomeroy

Secretary: Sandy Barrett

Treasurer: Gary McKenna

Swarm List Manager: Susan Slomski

Club email: hlbkc1@gmail.com

Annual Dues

\$25 per year (Jan-Dec)

- Includes membership to Colorado State Beekeeping Association
- Participation on the Swarm List
- In Apiary Activities
- Reimbursement for Master Beekeeping Program

Payment Options:

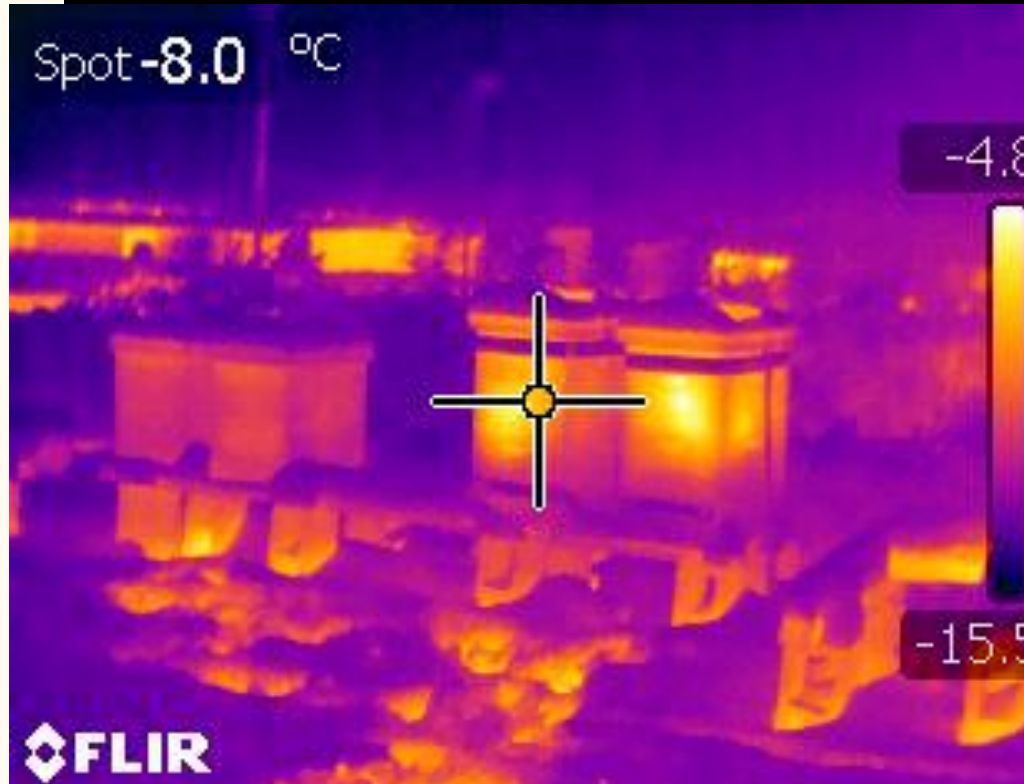
- Zelle: highlandbee2020@gmail.com
- Check: Payable to HLBKC c/o Gary McKenna 6250 E. Euclid Place, Centennial, CO 80111
- PayPal



In The Hive -February-

Typically Bees are Clustering in the cold weather - Not this Year

- Pollen has started coming in
- Brood production is underway and will accelerate whenever blossoms happen regardless of calendar
- Risk of chilled brood from inspections and cold snaps



Beekeeping Tasks -February-

- Check Hives for food supply
- Provide water
- Set your goals for the year
- Purchase and Repair Equipment
Do you have enough for swarm season?
- Check your bee suits for holes
- Order any Bees now
- Clean up Apiary
- Education



Diagnosing a Deadout

-Hands On Activity



Initial impressions

Deadout or abscond?

- Any physical damage to the hive?
 - Is there a smell?
 - Do you see dead bees?
 - If so how many and where?
 - Is food present?
 - Is there mite frass?
 - What else do you observe?
-

Favorite Equipment



Next Month

Installing Packages and Nucs

—



Questions?